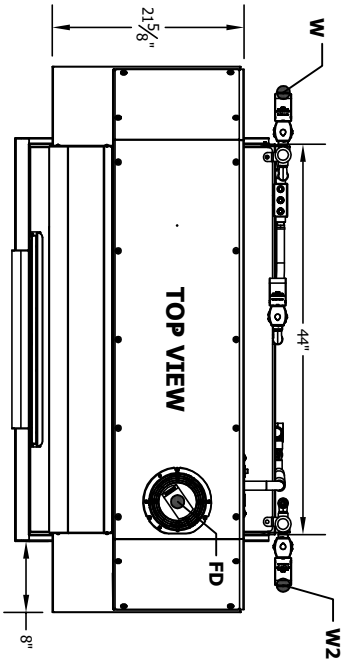
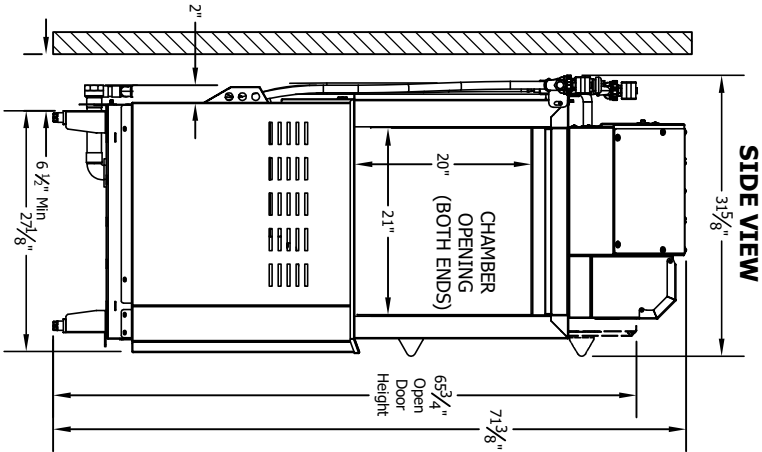
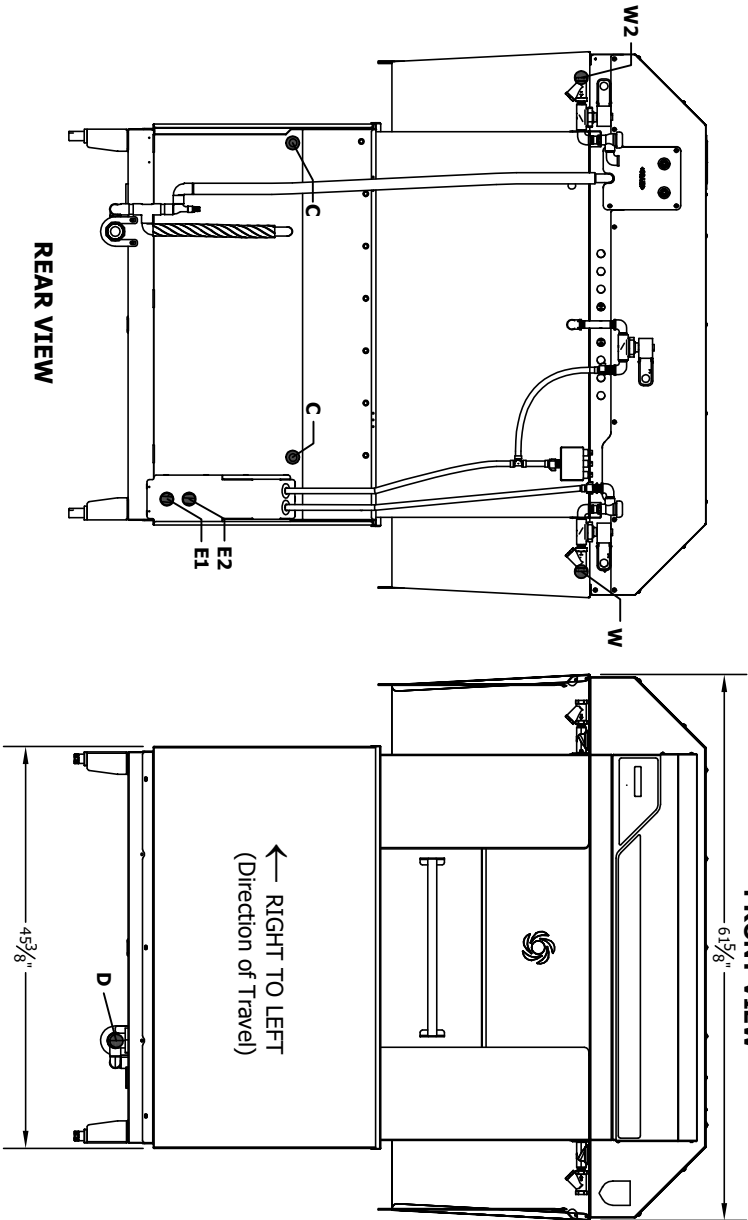


- NOTES:
- 1. ALLOW 6" MINIMUM CLEARANCE ABOVE THE VENT FAN DISCHARGE
 - 2. ALLOW 24" MIN. CLEARANCE BELOW DISH TABLE TO SERVICE ELECTRICAL EQUIPMENT



INSTALLATION CONNECTIONS		
Description	Note	
D DRAIN CONNECTION	1-1/2 F-NPT	
W HOT WATER INLET (110° F MIN.)	1/2 F-NPT	
E1 MAIN ELECTRICAL (SINGLE & 2-POINT)	1-3/8 HOLE	
E2 BOOSTER ELECTRICAL (2 PT ONLY)	1-3/8 HOLE	
C CHEMICAL LINE & SIGNAL ACCESS	1/2 HOLES (4)	
W2 COLD WATER INLET (75° F MAX.)	1/2 F-NPT	
FD FAN DISCHARGE (VG ONLY)	6" CLEARANCE	



insinger
MODEL: ADMIRAL 44 ADVANCED R-L (VAPOR GUARD)

FEET ARE ADJUSTABLE ±1 IN
REFER TO SPEC SHEET FOR ALL UTILITY REQUIREMENTS
PLEASE CONTACT FACTORY FOR TECHNICAL QUESTIONS

UNLESS OTHERWISE SPECIFIED, DIMENSIONS ARE IN INCHES		
XX .XXX FRACTIONS	ANGLES	
±.02 ±.005	±1/32 ±1/2	
THE INFORMATION ON THIS DRAWING IS THE PROPERTY OF INSINGER MACHINE COMPANY AND MAY NOT BE DISCLOSED TO ANY OTHER PARTY WITHOUT THE WRITTEN PERMISSION OF INSINGER MACHINE COMPANY. THIS INFORMATION IS NOT TO BE USED FOR ANY OTHER PURPOSES. ANY VIOLATION OF THE PROPRIETARY RIGHTS OF INSINGER MACHINE COMPANY WILL BE THE PARTY RESPONSIBLE TO APPROPRIATE LEGAL ACTION.		
INSINGER MACHINE CO. 6248 STATE ROAD PHILADELPHIA, PA 19135	DRAWN BY: JAL	DATE: 02/04/25
SCALE: 1:1	DWG NUMBER: 1000-10101	REVISION DATE: 02/04/25
DESCRIPTION: High Temperature Back Conveyor Decorated Metal Right Hand Feed With Vapor Guard Option	REV: A	SHEET 1 OF 1